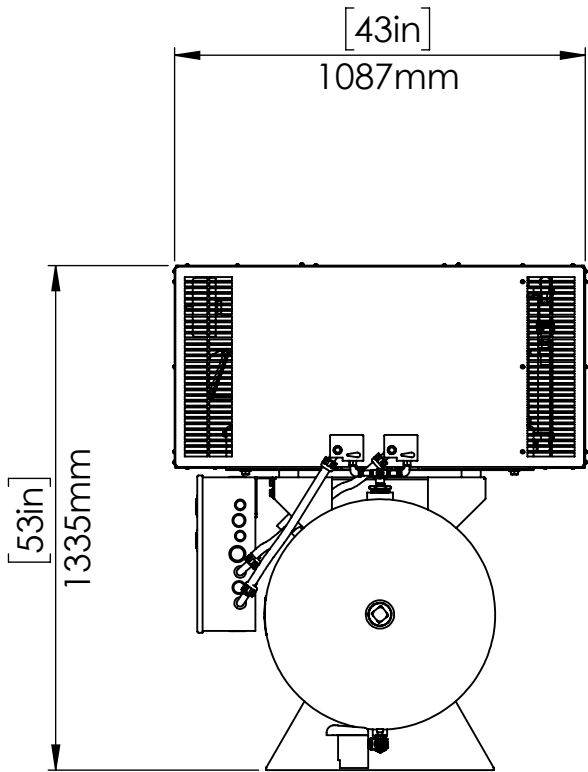
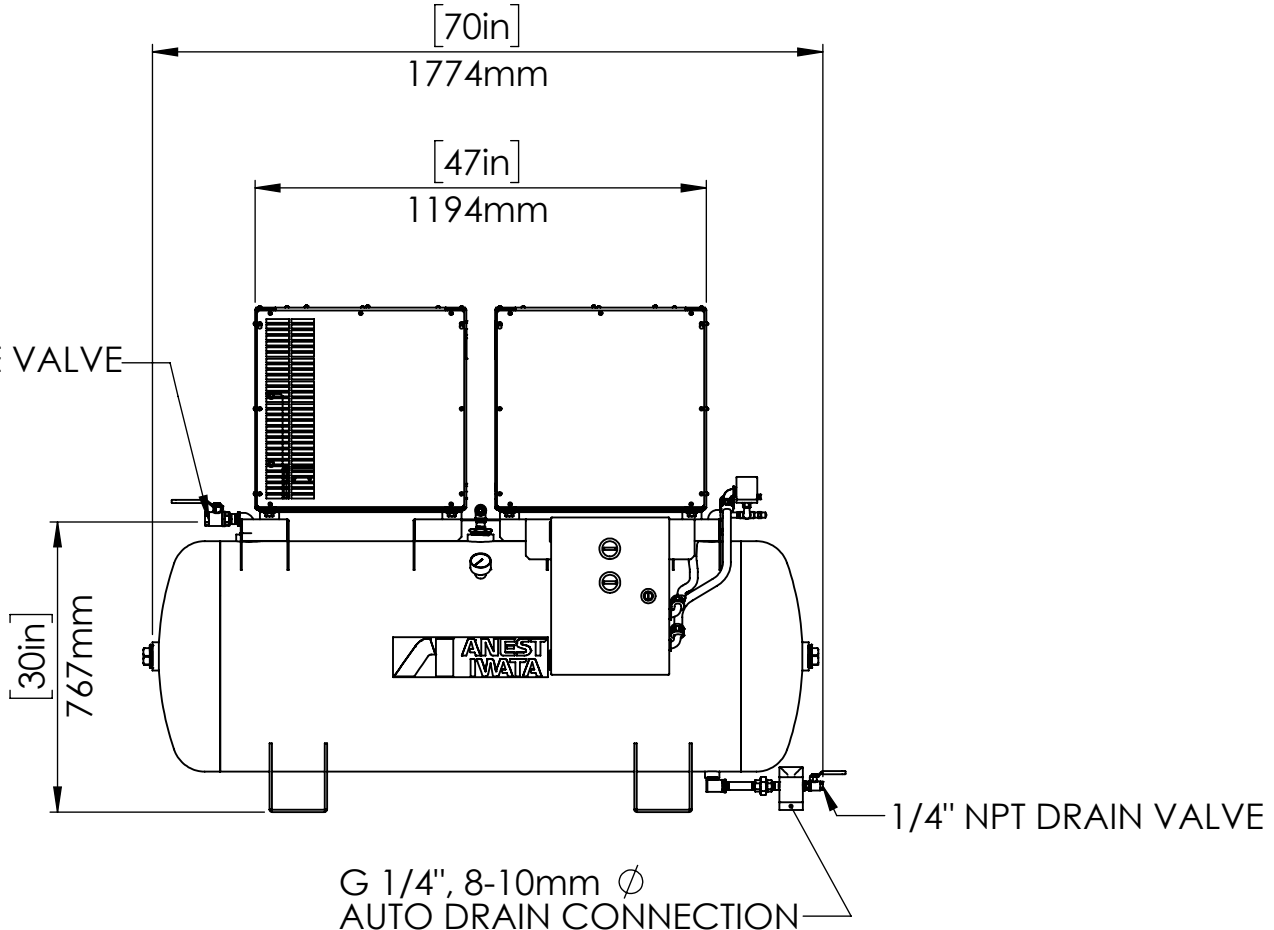


	SLTE-15D-120	SLTE-20D-120
HORSEPOWER	15	20
OPERATING PRESSURE (PSI)	85-115 (LEAD PUMP) 75-105 (SECOND PUMP)	
AIR DELIVERY (CFM)	45.2	59.4
CONTROL SYSTEM	MULTIPLE CONTROL UNIT - AUTO START/STOP	
NOISE LEVEL (dB A)	69	69
AIR OUTLET (BALL VALVE)	1" NPT	
OPERATING VOLTAGE	3 PHASE, 208-230V/460V, 60Hz	
DIMENSIONS (LxWxH)	70" x 43" x 53"	
APPROX WT. (LBS.)	1100	1160



- NOTES:**
- 1) COMPRESSOR UNIT MUST BE INSTALLED IN A ROOM ON A FLAT FLOOR
 - 2) COMPRESSOR IS AN AIR COOLED UNIT - ROOM TEMPERATURE MUST NOT EXCEED 104° F
EXHAUST DUCTS OR VENTILATING FAN MUST BE INSTALLED IF ROOM TEMPERATURE EXCEEDS 104° F
 - 3) PROVIDE ADEQUATE SPACE DURING INSTALLATION FOR NECESSARY MAINTENANCE AND REPAIRS
ALLOW A MINIMUM OF 20" ON EACH SIDE AND 24" FROM TOP OF UNIT FROM WALLS
 - 4) CARE MUST BE TAKEN TO INSURE COMPRESSOR UNIT DOES NOT INTAKE HOT AIR OR DUST
 - 5) REFER TO INSTRUCTION MANUAL FOR ELECTRIC WIRING DIAGRAM
 - 6) SPEC IS SUBJECT TO CHANGE WITHOUT NOTICE

PROPRIETARY AND CONFIDENTIAL
THE INFORMATION CONTAINED IN THIS DRAWING IS THE SOLE PROPERTY OF ANEST IWATA. ANY REPRODUCTION IN PART OR AS A WHOLE WITHOUT THE WRITTEN PERMISSION OF ANEST IWATA IS PROHIBITED.

UNLESS OTHERWISE SPECIFIED:		NAME	DATE	ANEST IWATA Air Engineering Inc.
DIMENSIONS ARE IN INCHES		DRAWN	AMM 5/4/20	
		CHECKED		
		ENG APPR.		
		MFG APPR.		
INTERPRET GEOMETRIC TOLERANCING PER:		Q.A.		TITLE: SLTE-15D/20D-120 OIL-FREE SCROLL UNIT TANK MOUNT COMPRESSOR
MATERIAL ASS'Y		COMMENTS:		
PART NO.				
DO NOT SCALE DRAWING		SIZE B	DWG. NO. SLTE-20D(H)-120-R1	REV 1
		SCALE: 1:20 WEIGHT:		SHEET 1 OF 3