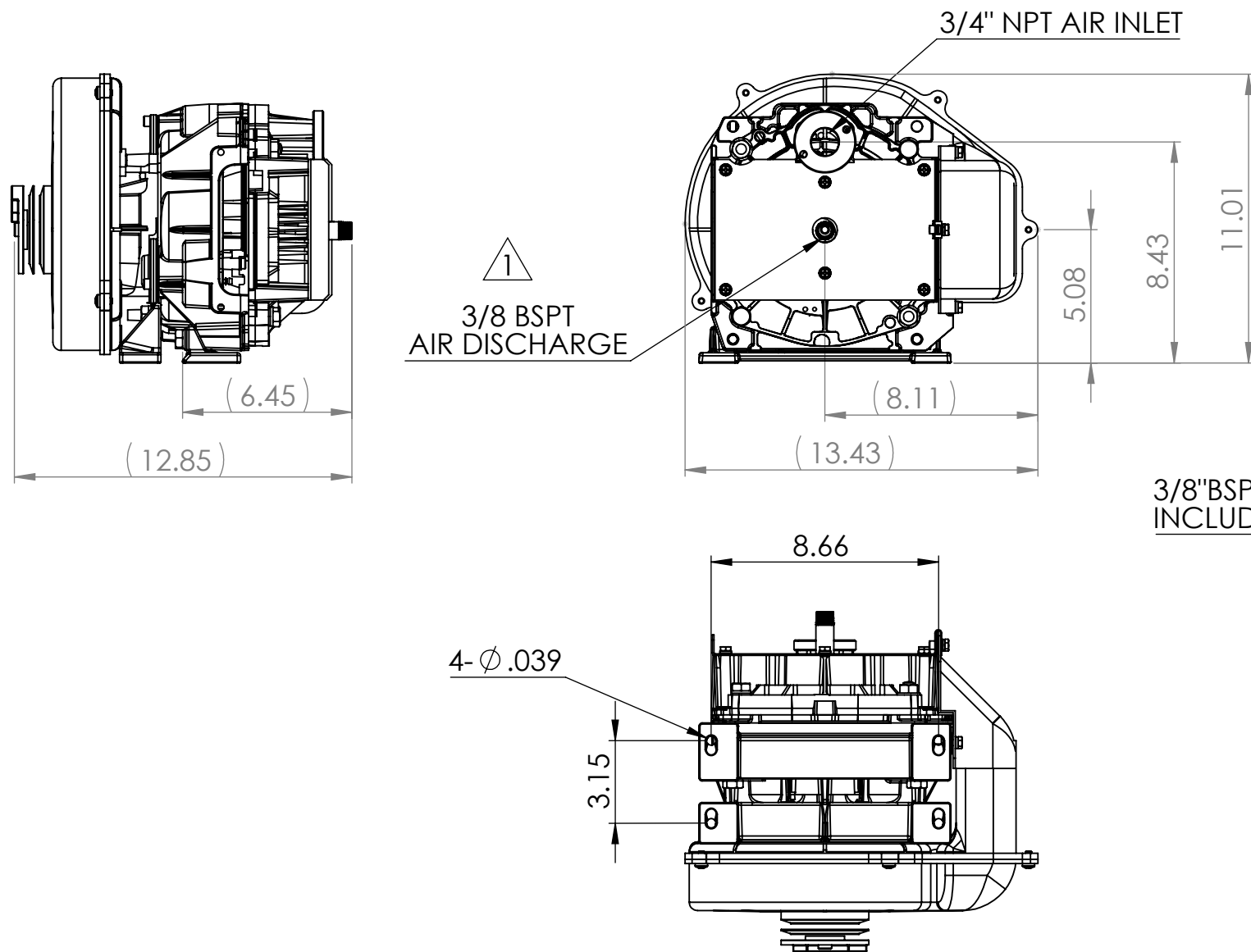
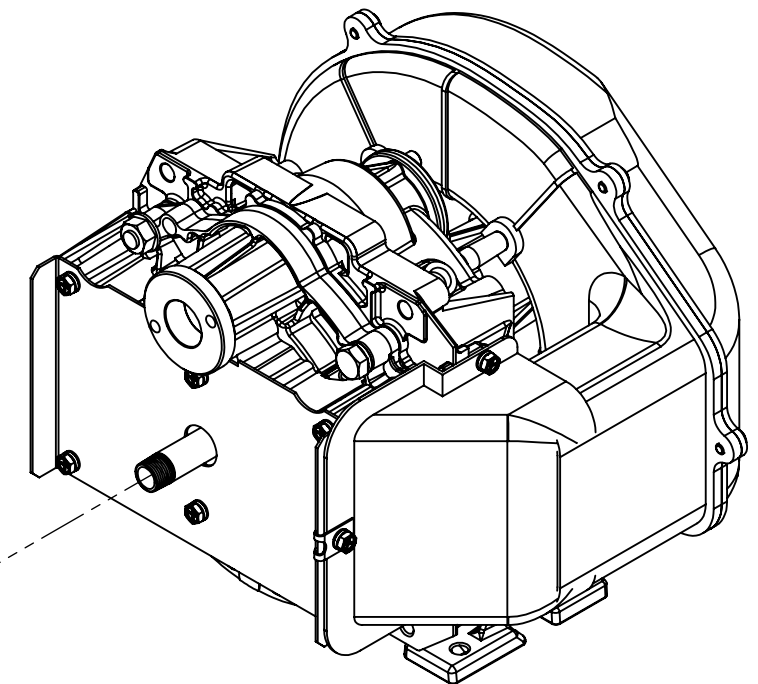


Specifications for 2HP		
ITEM	SL-140EB-US	
MAX OPERATING PRESSURE	PSI	145
F.A.D.	CFM	4.5
MAX OPERATING RPM	RPM	1850
OPERATING TEMP	36 TO 104° F	
Specifications for 3HP		
ITEM	SL-140EB-US	
MAX OPERATING PRESSURE	PSI	145
CFM	CFM	7.5
MAX OPERATING RPM	RPM	2770
OPERATING TEMP	36 TO 104° F	




3/8"BSPT X 1/2" NPT ELBOW INCLUDED IN THE BOX



- NOTES:
- 1) COMPRESSOR PUMP MUST BE INSTALLED IN A UNIT ON A FLAT FLOOR
 - 2) COMPRESSOR IS AN AIR COOLED UNIT - ROOM TEMPERATURE MUST NOT EXCEED 104° F
 - 3) EXHAUST DUCTS OR VENTILATING FAN MUST BE INSTALLED IF ROOM TEMPERATURE EXCEEDS 104° F
 - 4) CARE MUST BE TAKEN TO INSURE COMPRESSOR UNIT DOES NOT INTAKE HOT AIR OR DUST
 - 5) SPEC IS SUBJECT TO CHANGE WITHOUT NOTICE

PROPRIETARY AND CONFIDENTIAL
 THE INFORMATION CONTAINED IN THIS DRAWING IS THE SOLE PROPERTY OF ANEST IWATA. ANY REPRODUCTION IN PART OR AS A WHOLE WITHOUT THE WRITTEN PERMISSION OF ANEST IWATA IS PROHIBITED.

MATERIAL ASS'Y
 PART NO. SL-140EB-US
 DO NOT SCALE DRAWING

NAME	DATE	ANEST IWATA Air Engineering Inc. 
DRAWN SDR	8/11/20	
CHECKED SDR	8/11/20	
ENG APPR. T. DOI	8/11/20	
MFG APPR. T. DOI	8/11/20	
Q.A.		TITLE: SL-14EB-US OILESS SCROLL AIR COMPRESSOR
COMMENTS:		
SIZE B	DWG. NO. SL-140EB-US	REV 1
SCALE: 1:6	WEIGHT:	SHEET 1 OF 1